



RISe

Research &
Innovation
in the Spotlight

**Institute of Research
Management and Innovation**
@Universiti Teknologi MARA



Research
Interest
Group

Maternofetal & Embryo Research Group



by Nur Hamizah Mohd Radzi
Research Impact and Ethics Unit
Institute of Research Management and Innovation





RISe | Research &
Innovation
in the Spotlight

Professor Dr. Nor Ashikin Mohamed Noor Khan

Head of RIG

noras011@salam.uitm.edu.my



MEMBERS

Professor Dr. Nor Ashikin Mohamed Noor Khan
Professor Dr. Mohd Hamim Rajikin
Assoc. Professor Dr. Suzanna Daud
Dr. Bahiyah Abdullah

Dr. Yuhaniza Shafinie Kamsani
Dr. Mohamad Rodi Isa
Dr. Salmi Razali
Mr. Razif Dasiman

A group of approximately 15 individuals, mostly women wearing hijabs, are standing in a long, brightly lit hallway. They are all wearing white lab coats with a logo on the left chest that reads "MatE". The hallway has a tiled ceiling with recessed lights and a "EXIT" sign in the distance. The overall atmosphere is professional and organized.


VISIBILITY

MatE members are office bearers of several professional bodies and have contributed to the organization of several international and national conferences with industrial partners over the years. Members serve as expert panel, evaluators of national and international grants, reviewers of indexed journals and examiners of postgraduate thesis and the medical curriculum.

RESEARCH areas

The Maternofetal and Embryo Research Group (MatE) aims to promote an interest and collaboration”s” in the study of maternofetal medicine, embryology and reproductive biology. The MatE group facilitates research, and dissemination of research findings in these areas to the general public, industry, scientists, clinicians and patients. Sub-areas of study include general obstetrics, urogynaecology, women and perinatal mental health, Assisted Reproductive Technology, stress in pre- and post-implantation embryonic development, as well as natural products and fertility



A black and white photograph of a scientist in a white lab coat looking through a microscope. The microscope is mounted on a metal frame with a clear protective shield. The scientist is in profile, looking intently at the eyepiece. The background shows a laboratory environment with various pieces of equipment and a window.

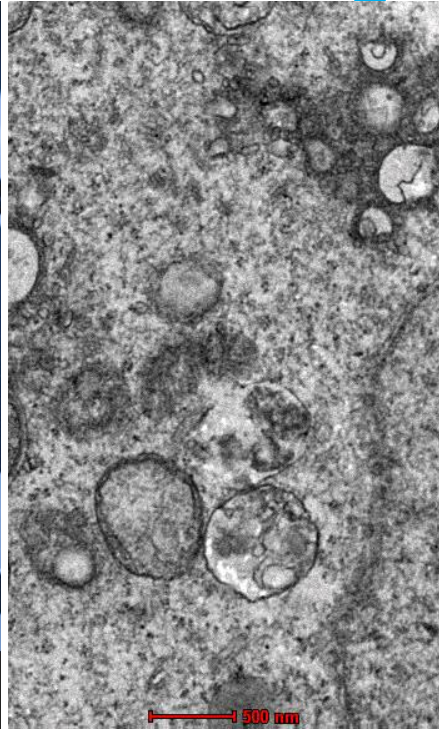
on-going RESEARCH

Research conducted by group members of the embryo research team mainly focuses on the study of various stressors on pre and post-implantation development in Assisted Reproductive Technology. Apart from that, several studies are being carried out on the use of natural products to improve male gamete quality and embryonic development. Clinical studies are pursued in the areas of urogynaecology, effects of environmental tobacco exposure and cervical cancer.

OUR expertise



Preimplantation
Embryonic
Development



Embryo
Imaging



Male fertility



Gynecology



Women and
Perinatal
Mental Health



Public Health

COLLABORATION

The MatE research group members collaborate with national as well as international bodies. International collaborations have been fostered with Harvard University, Northeastern University, Bedford Stem Cell Research Foundation and Massachusetts General Hospital. Industrial partners include Eppendorf Asia Pacific Pte Ltd, Abbott Laboratories (M) Pte Ltd and Honda Global Amity. Malaysian collaborators are The National Population and Family Development Board (LPPKN), Universiti Kebangsaan Malaysia, Universiti Malaya and the International Islamic University Malaysia.



United States of America

Harvard University, Northeastern University, Bedford Stem Cell Research Foundation & Massachusetts General Hospital

Malaysia

Universiti Kebangsaan Malaysia and International Islamic University of Malaysia

research IMPACT

MatE members are currently involved in the training of nine PhDs. The group has graduated four PhDs and four MSc candidates. The group has secured industrial, national and institutional research grants totalling RM 1.5 million, with over 40 publications in the last two years. The group also holds several industrial grants

A scientist in a white lab coat is shown in profile, looking through a microscope. The microscope is mounted on a complex piece of laboratory equipment with various tubes and components. The scene is set in a laboratory with a clean, professional appearance.

The grants have resulted in a total of **14 intellectual properties** from MatE members, with 27 innovation awards in the last two years



COMMERCIALIZATION

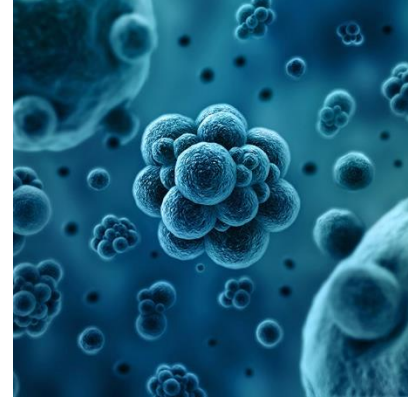
MatE provides services for confocal laser scanning microscopy, as well as transmission and scanning electron microscopy services for embryo imaging. Mouse embryo assays for IVF clinics and time-lapse imaging for murine embryo studies are also offered as services. The group is planning to launch research-based nutritional products for pregnancy and post-partum recovery. Also in the pipeline are the production of healthcare Apps for patients.

Facilities

Embryo
Laboratory



Imaging



Animal
Facilities



Animal Cell
Culture



Molecular



FORWARD- looking

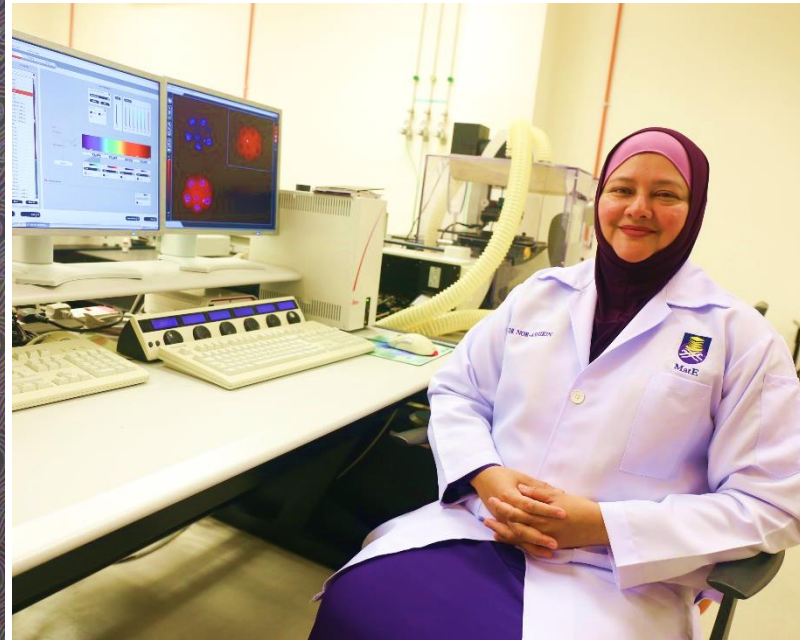
The next five years will be focused on expanding industrial and academia collaborations internationally, as well as applications for competitive global grants on maternofetal health and developmental origins of health and disease (DOHaD).



MatE2U

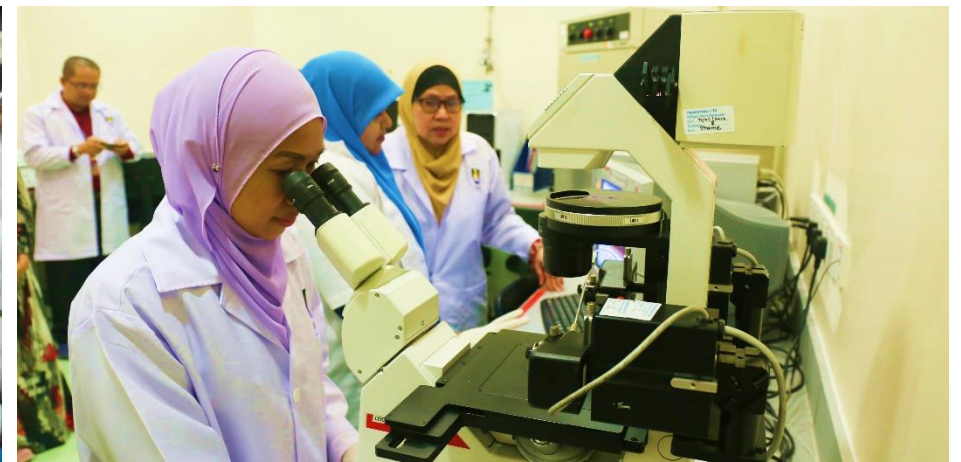
MatE produces community service videos as part of a community educational outreach program called MatE2U. The MatE2U program also includes face to face community health and education engagements nationwide. The videos are available for public viewing on MatE website.





Maternofoetal & Embryo Research Group (MatE)






contact US



Maternofetal & Embryo Research Group (MatE)
Faculty of Medicine
Universiti Teknologi MARA
Jalan Hospital
47000 Sungai Buloh, Selangor
MALAYSIA



		
TELEPHONE	EMAIL	WEBSITE
+603-5544 7199	materg2U@gmail.com	mate.uitm.edu.my

For further enquiries, please contact MatE Secretary, Dr Yuhaniza Shafinie Kamsani at the Faculty of Medicine, Universiti Teknologi MARA, Malaysia



a publication by



Research Impact and Ethics Unit
Institute of Research Management and Innovation
Universiti Teknologi MARA

If you are interested to publish your article on research, kindly contact

Dr. Mohd Hafiz Mohd Hanafiah
Coordinator, Research Impact and Visibility
Tel: 03 5544 3083
hafizhanafiah@salam.uitm.edu.my